

Single-Seat Ball Float Steam Trap

FT43/44 Screwed & Flanged

DAGO



Single-Seat Ball Float Steam Trap

FT43/44 Screwed & Flanged

Application

Ball float steam traps are extremely versatile and work efficiently on both light and heavy condensate loads. Although compact in size, their discharge capacity is high and continuous,

ensuring maximum heat transfer. These traps are the best choice for draining plant with automatic temperature control.

(Single seat suitable for DN15~DN65, Discharge capacity: less than 5000kg/h)

Single-Seat Ball Float Steam Trap

FT43/44 Screwed & Flanged



Size and pipe connections

DN32-DN50 Screwed BSP or NPT

DN15-DN65 Flanged EN 1092 PN16/PN25, ANSI 150

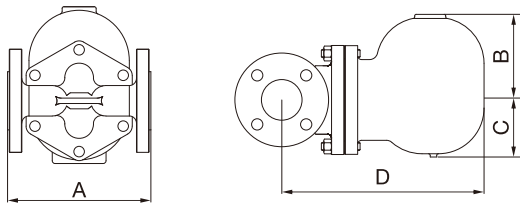
Material

Part	Material
Body/Cover	A216 WCB
Cover bolts	A193 B7
Cover gasket	graphite+SS304 or ss316
Valve seat	A276 430
Ball float and lever	A240 304
Air vent assembly	A240 304

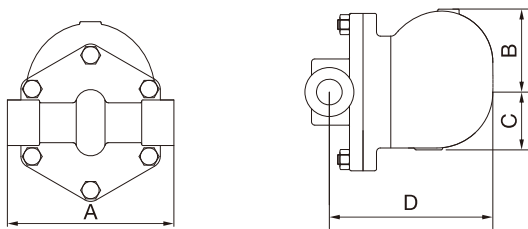
Note: 1.The material can according to the customer' s request or actual valve working condition.
2.The surface of valve can use high temperature resistant black or blue paint, but also can according to the customer' s request.

Limited condition

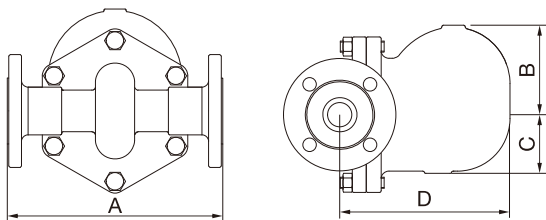
Body design conditions	PN40
PMA Maximum allowable pressure	40Bar g
TMA Maximum allowable temperature	300°C
Maximum differential pressure (Δ PMX)	32Bar



FT43 DN15~DN50

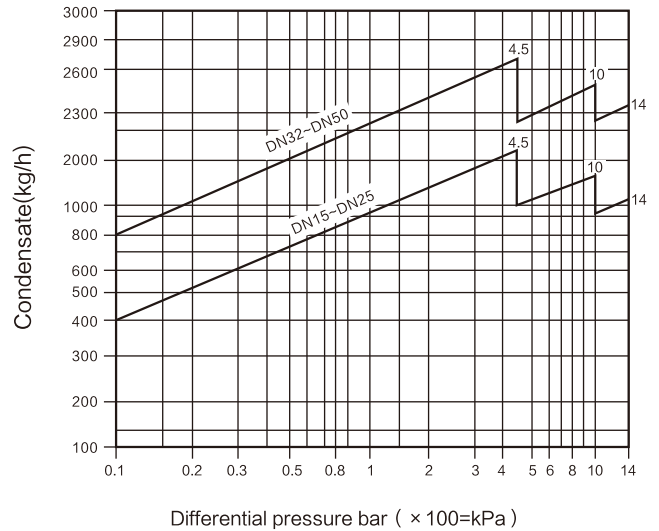


FT14 DN32~DN50



FT44 DN32~DN65

Capacities



Installation

Horizontal connections with flow from right to left.

Horizontal connections with flow from left to right.

Standard

Design standard: ISO6552; EN26704

Face to face dimension: EN26554

Test & inspection: EN26948

Dimensions/weights(approximate)in mm and kg

FT43 Flanged

Size	A	B	C	D	Weight
DN15	150	105	70	250	9
DN20	150	105	70	250	9.2
DN25	160	105	70	250	9.5
DN32	230	115	75.5	335	20
DN40	230	115	75.5	335	20
DN50	230	115	75.5	350	21.5

FT44 Flanged

Size	A	B	C	D	Weight
DN32	270	115	75.5	225	19.5
DN40	270	115	75.5	225	19.5
DN50	270	115	75.5	225	20
DN65	270	115	75.5	225	22

Double-Seat Ball Float Steam Trap

FT43/44 Screwed & Flanged

DAGO



FT43 Flanged



FT44 Flanged

Double-Seat Ball Float Steam Trap

FT43/44 Screwed & Flanged

Application

Ball float steam traps are extremely versatile and work efficiently on both light and heavy condensate loads. Although compact in size, their discharge capacity is high and continuous,

ensuring maximum heat transfer. These traps are the best choice for draining plant with automatic temperature control.

(Double seat suitable for DN32~DN80, Discharge capacity: 5000kg/h~20000kg/h)

Double-Seat Ball Float Steam Trap

FT43/44 Screwed & Flanged



Size and pipe connections

DN32–DN50 Screwed BSP or NPT

DN32–DN80 Flanged EN 1092 PN16/PN25, ANSI 150

Material

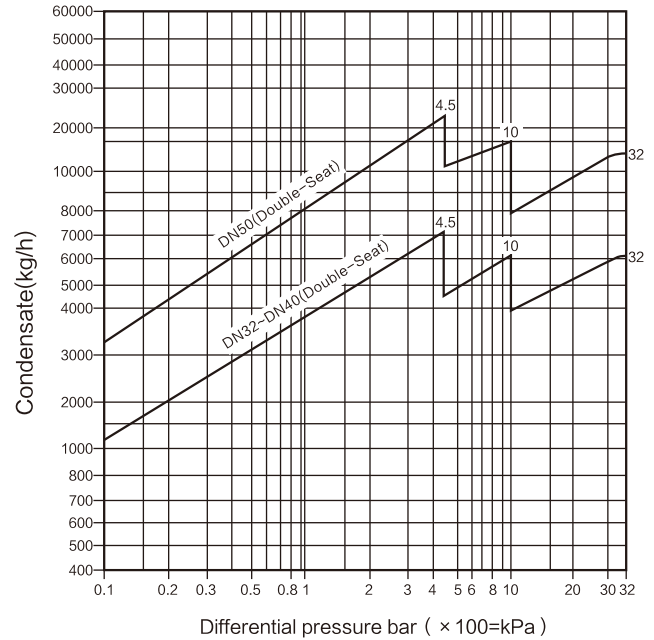
Part	Material
Body/Cover	A216 WCB
Cover bolts	A193 B7
Cover gasket	graphite+SS304 or ss316
Valve seat	A276 430
Ball float and lever	A240 304
Air vent assembly	A240 304

Note:1.The material can according to the customer' s request or actual valve working condition.
2.The surface of valve can use high temperature resistant black or blue paint, but also can according to the customer' s request.

Limited condition

Body design conditions	PN40
PMA Maximum allowable pressure	40Bar g
TMA Maximum allowable temperature	300°C
Maximum differential pressure (Δ PMX)	32Bar

Capacities



Installation

Horizontal connections with flow from right to left.

Horizontal connections with flow from left to right.

Standard

Design standard: ISO6552; EN26704

Face to face dimension: EN26554

Test & inspection: EN26948

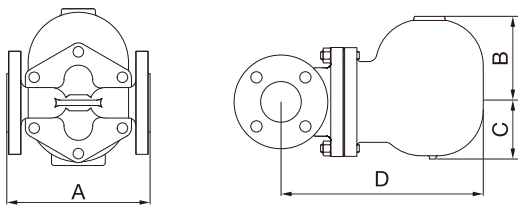
Dimensions/weights (approximate) in mm and kg

FT43 Flanged

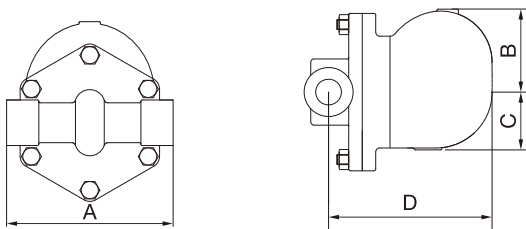
Size	A	B	C	D	Weight
DN32	230	140	125	330	26
DN40	230	140	125	330	26.5
DN50	230	140	125	330	26.5

FT44 Flanged

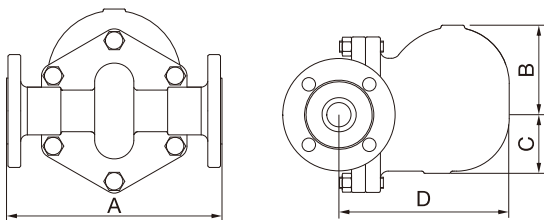
Size	A	B	C	D	Weight
DN32	270	129	90	255	27
DN40	270	129	90	255	27
DN50	270	129	90	255	27.5
DN65	270	129	90	255	29
DN80	320	129	90	255	34



FT43 DN32~DN50



FT14 DN32~DN50



FT44 DN32~DN80